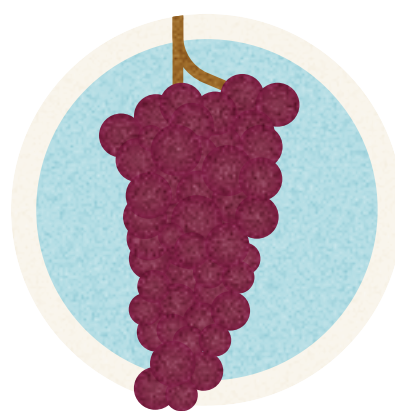
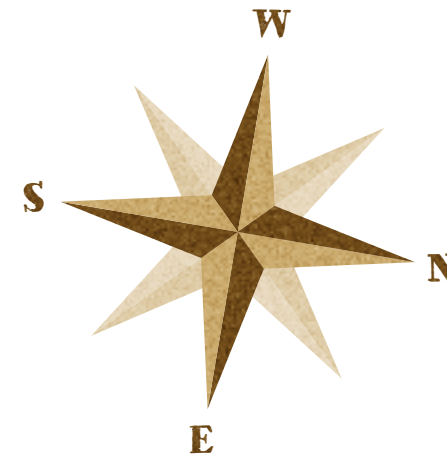
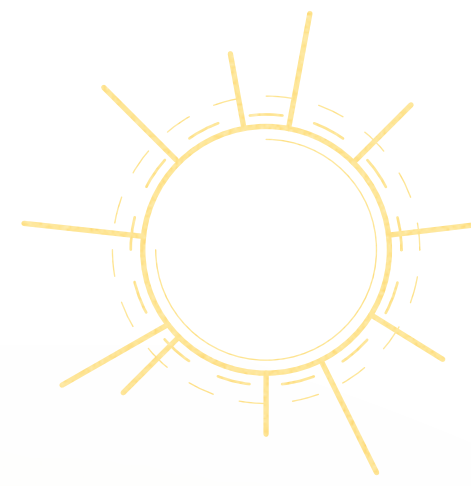




Etna (Sicilia)



GRAPES

Nerello Mascalese (rosso)
 Nerello Cappuccio (rosso)
 Carricante (bianco)
 Catarratto (bianco)



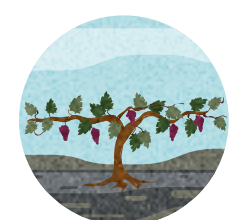
SURFACE RELEVANCE

Lava flows of different dating. Several cones on the flanks



SOIL

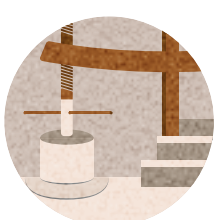
Volcanic soils
 Particles range in size from dust to rocks (pumice, lapilli, tuff) with sand dominant
 Rich in micronutrients, poor in nitrogen and phosphate



ALBERELLO ETNEO
 HEAD-TRAINED
 BUSH VINES



CIRNECO
 DELLE
 ETNA
 DOG



ANCIENT
 PALMENTO



LAVA-STONE
 TERRACING



BRONTE
 PISTACHIO



OLIVE
 OIL



HONEY



SHEEP-
 FARMING