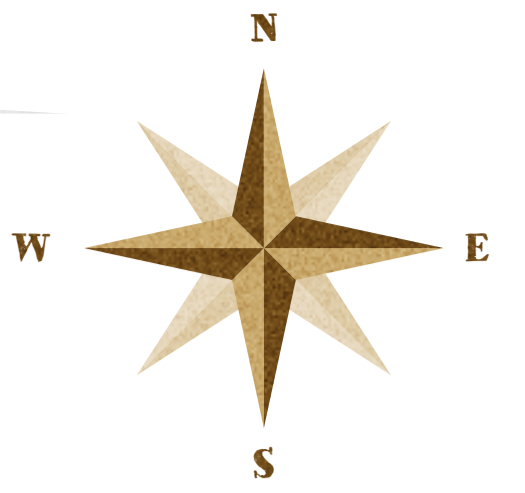




# Barolo

La Morra e Verduno



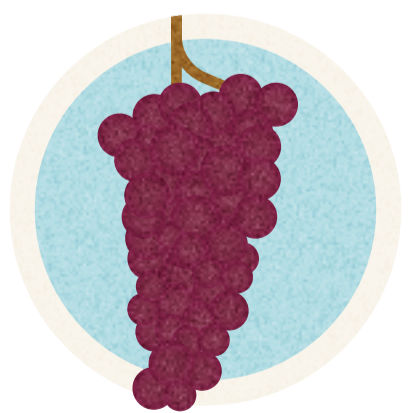
ROERO



BAROLO

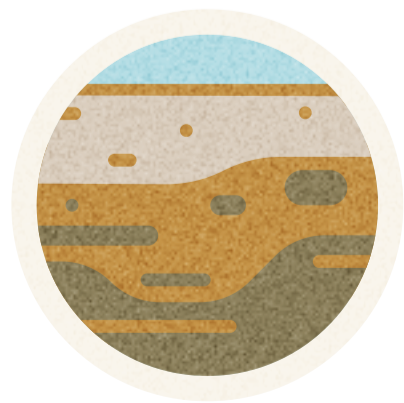
MONFORTE D'ALBA

CASTIGLIONE FALLETTO



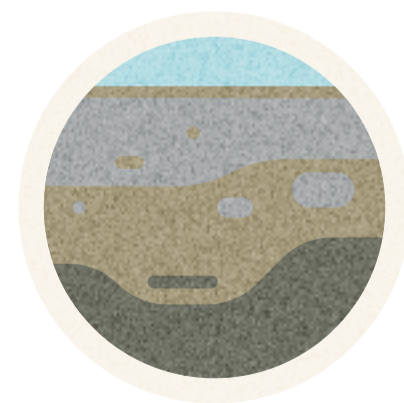
## GRAPES

Arneis, Favorita, Nebbiolo, Barbera, Dolcetto, Freisa, Pelaverga



## SURFACE N°1

FORMAZIONE DI CASSANO-SPINOLA  
Cassano Spinola Formation (Messinian):  
clayey and sandy marls

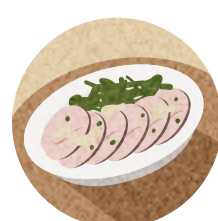


## SURFACE N°2

MARNE DI SANT'AGATA  
FOSSILI - Sant'Agata Fossil Marls (Tortonian-Messinian):  
The soils present a consistent amount of clay and silt.



TAJARIN



VITELLO TONNATO



FINANZIARA



FRITTO MISTO



ACCIUGHE AL VERDE



AGNOLOTTI DEL PLIN