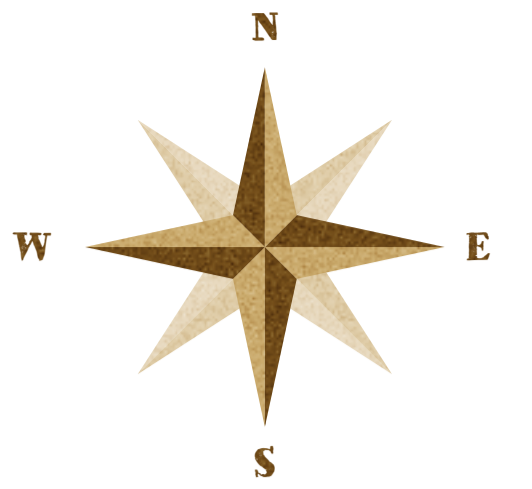
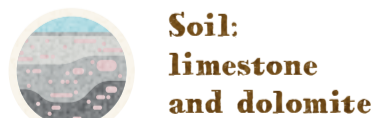




Alto Adige



BASSA ATESINA



Soil: limestone and dolomite



Grapes (mainly): Pinot Noir (Mazzon), Gewurztraminer (Termeno), Pinot Grigio, Chardonnay, Schiava

OLTREADIGE E TERLANO



Soil: limestone and volcanic porphyry

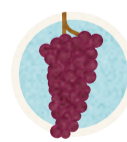


Grapes (mainly): Schiava, Pinot Nero, Pinot Bianco, Sauvignon, Chardonnay

VAL VENOSTA



Soil: weathered slate and gneiss, sandy



Grapes (mainly): Riesling, Pinot Bianco, Pinot Noir

VALLE ISARCO

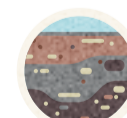


Soil: primitive rock soil composed of quartz and mica

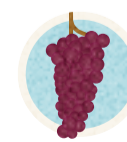


Grapes (mainly): Sylvaner, Muller-Thurgau, Kerner, Riesling, Gruner-Veltliner

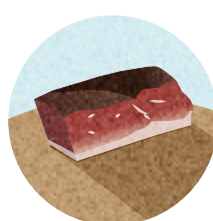
BOLZANO - S. MADDALENA - GRIES



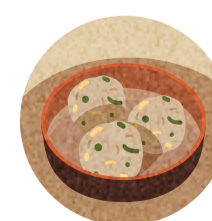
Soil: primarily porphyry debris and alluvial soils in the valley



Grapes (mainly): Schiava, Lagrein



SPECK HAM



CANEDERLI



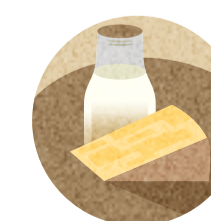
SCHÜTTELBROT



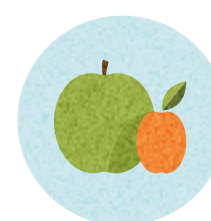
APPLE STRUDEL



HONEY



MILK AND DAIRY PRODUCTS



APPLE AND APRICOTS